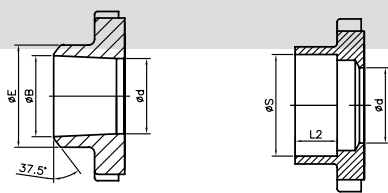
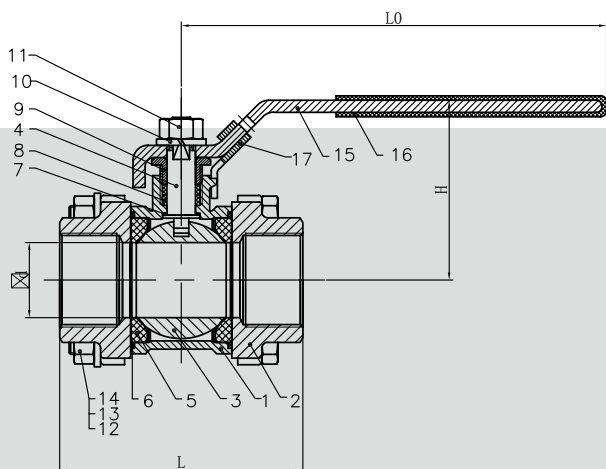


V-3 3 Piece Internals Threaded Ball Valve



Size	Φd	L	H	W	ΦB	ΦE	ΦS	L2	Torque
1/4	11	50.4	48	103	10.8	18	14.2	10	4 ~ 5
3/8	12	50.4	48	103	12.7	19.5	17.6	10	4 ~ 5
1/2	15	61.4	50	103	16.1	23	21.7	10	6 ~ 8
3/4	20	70	60	127	21	28	27.1	14	8 ~ 10
1	25	79.6	64	127	26.7	34	33.8	14	12 ~ 5
1-1/4	32	93	79	154	35.1	41	42.6	15	18 ~ 20
1-1/2	38	102	85	154	40.5	49	48.8	15	25 ~ 30
2	50	124	87	192	54.8	61	61.1	19	35 ~ 45
2-1/2	65	156	117	244	65	78	73.8	21	55 ~ 65
3	76	179.2	125	244	80.5	94	89.8	24	80 ~ 90
4	100	218.4	173	330	100	116	115.5	35	140 ~ 160

⊙ Full bore

⊙ Threaded ends: ANSIB2.1 BS

21, DIN259/2999 JIS 130202/130203

Internal entry blow-out proof stem

⊙ Material: CF8M CF8 CF3M WCB

⊙ Pressure rating: 1000PSI WOG

⊙ Pressure test: API 598

Lever handle with locking device

17	V3S0017	Lock washer	304
16	V3S0016	Nut	304
15	V3S0015	Spring washer	304
14	V3S0014	Bolt	304
13	V3S0013	Handle Sleeve	Rubber
12	V3S0012	Handle	304
11	V3S0011	Nut	304
10	V3S0010	Spring washer	304
9	V3S0009	Gland	304
8	V3S0008	Stem packing	PTFE
7	V3S0007	Thrust washer	PTFE
6	V3S0006	Gasket	PTFE
5	V3S0005	Seat	PTFE+3% GF
4	V3S0004	Stem	316
3	V3S0003	Ball	CF8M
2	V3S0002	Cap	CF8M
1	V3S0001	Body	CF8M
No.	Drawing No.	Name	Material