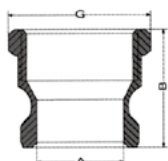


QUICK JOINTS



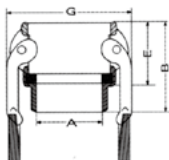
A



DIM	1/2	3/4	1	1-1/4	1-1/2	2	2-1/2	3	4	5	6
A	16	21	24	28.5	36	58	45	74	100	122	150
B	38.5	38.5	48.5	56.5	61	85	64.5	73	78	95	86
G	32	32	40	48	56	81.75	67	95.6	126.5	154	190



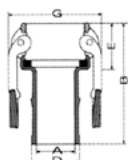
B



DIM	1/2	3/4	1	1-1/4	1-1/2	2	2-1/2	3	4	5	6
A	14	19	24	30	37	50	62	74	100	122	145
B	52	52	65	72.5	73	80	90	94	101	102	118
E	32	32	41	48.5	49	54	59	60	62	62	72
G	53	54	60	71.5	80	95	104	126	153.4	184	219



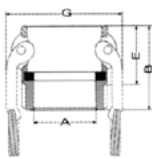
C



DIM	1/2	3/4	1	1-1/4	1-1/2	2	2-1/2	3	4	5	6
A	14	14	20	25	31	43	55	68	93	115	140
B	90	90	105	116.5	118	134	154	163	175	187	214
D	20	20	25.5	33	39	52	65	78	105	130	155
E	32	32	41	48.5	49	54	59	60	63	62	72
G	53	54	60	71.5	80	95	104	126	153.4	184	219



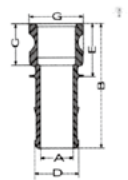
D



DIM	1/2	3/4	1	1-1/4	1-1/2	2	2-1/2	3	4	5	6
A	16	19	26	33	39	50	61	75	92	122	145
B	52.5	52.5	63	68.5	71	78.5	85.5	90.5	96.5	102	118
E	32.2	32.2	41	48.5	49	54	59	60	63	62	72
G	53	53	60	71.5	80	95	104	126	153.4	184	219



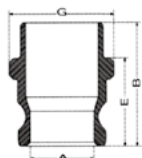
E



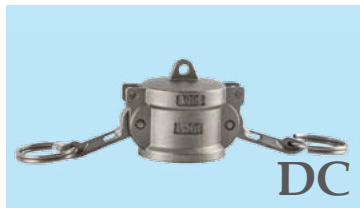
DIM	1/2	3/4	1	1-1/4	1-1/2	2	2-1/2	3	4	5	6
A	14	14	20	25	31	43	55	68	93	115	140
B	98	98	108.5	121	125	140	158	169	180	196	220
G	28	28	32	38	42.5	45	50	50	49.5	154	184
D	20	20	25.5	33	39	52	65	78	105	130	155
E	40	40	45.5	53	55.5	60	64	65	66.5	71	78



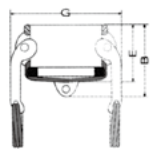
F



DIM	1/2	3/4	1	1-1/4	1-1/2	2	2-1/2	3	4	5	6
A	21.5	21.5	24	29	37	46.5	58	74	100	122	148
B	55	55	71.5	80	84	87	99	104.5	112.5	121	130
G	33	33	38.5	47.5	55	66	80	95	122	154	190
E	38	38	47.5	56	60	61	68.5	71.5	76.5	81	86



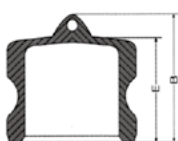
DC



DIM	1/2	3/4	1	1-1/4	1-1/2	2	2-1/2	3	4	5	6
B	45	45	54	65	69	78	83	88	94	94	112
E	35	35	41.5	51	52	59	64	65	70	70	82
G	53	54	60	79	83	94	109	130	158	184	219



DP



DIM	1/2	3/4	1	1-1/4	1-1/2	2	2-1/2	3	4	5	6
B	37	37	44	55	64	68	70	80	80	80	98
E	26	25	32	41	44	48	50	57	56	56	66